



SALEM BULK - VALLEY VIEW PROJECT

Wabash Valley Power Alliance, Citizens Electric’s wholesale power supplier, is proposing to construct a new, approximately 19-mile 69 kV* transmission line to improve energy reliability for local communities in Southeast Missouri. The new line will connect the Salem Bulk Substation east of Farmington to the Valley View Substation north of Bloomsdale. The proposed in-service date for the project is 2024.

PROJECT BENEFITS



Improve energy reliability for local homes and businesses



Support area economic growth



Improved transmission capacity



Maintenance can be performed without disrupting power



New annual tax revenue to support communities in Southeast Missouri

SCHEDULE

2020 & 2021

- o Engineering & permitting
- o Field surveys
- o Real estate acquisitions

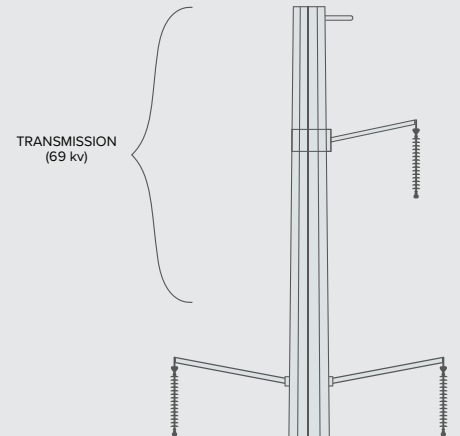
2022 & 2023

- o Construction

2024

- o Project in-service Q1

*1kV = 1,000 volts



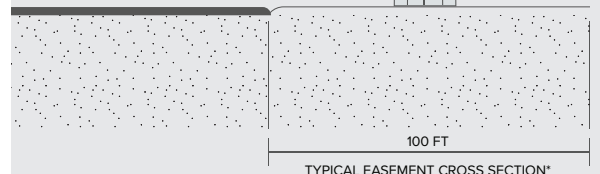
Typical 69 kV Steel Monopole Structures

Height:
65 – 80 ft

Span:
600 – 800 ft

Structures/mile:
6 – 10

EDGE OF EASEMENT

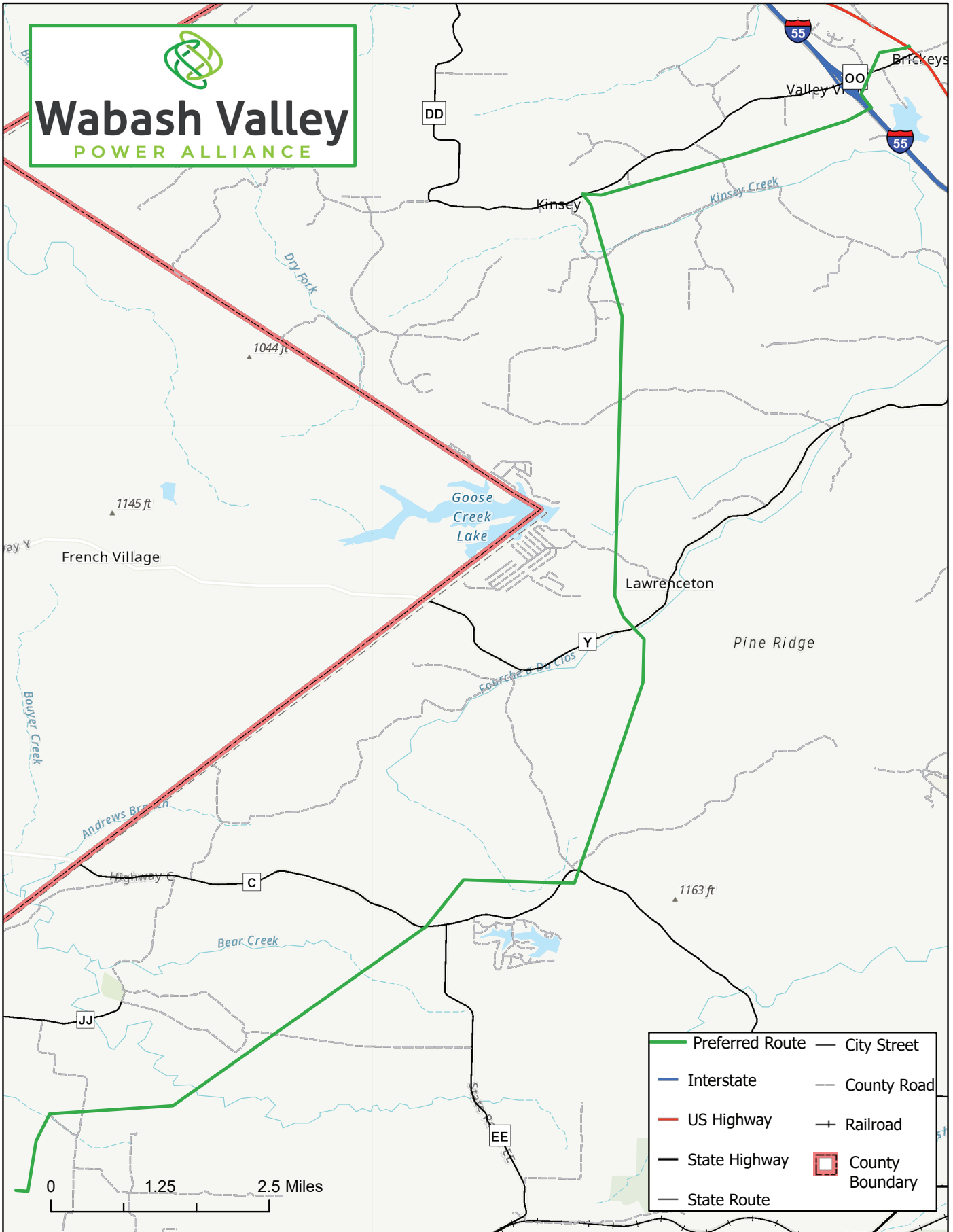


*Vegetation is removed



Wabash Valley

POWER ALLIANCE



For more information about the project, please visit: wvpa.com/salembulk or call (888) 997-0766